



# Beatty Museum and Historical Society

## Quarterly Newsletter for January to March 2008

### From The President

Hello everyone, I hope your new year looks as exciting as ours at the Museum. Lots of things have been happening. We have high hopes and plans for 2008. This is rather a long newsletter, catching everyone up along with some interesting news. Hope you enjoy this edition.

When you stop by the museum, pay attention to the mine display in the front. It has really enhanced the landscaping and is being enjoyed by many of the tourists. Thank you Riley and Chuck for doing this for us.

The first order of the engraved bricks are in and looking great! We have the gazebo and will be putting it up in the near future. Everyone is very excited about this project.

The museum hosted the Angle Tree again this year for the Lions Club in Beatty. We had 40 angles and was able to take care of them all. Thank you to everyone that helped make Christmas a special holiday for these youngsters.

We have a real gift shop in the Museum now. Right in front and doing well. Maxine makes sure that there are plenty of books to buy. Drop in and check it out.

Welcome to all our new members and thank you for all the new donations and loans. We have been blessed with a community and members that help the Museum grow daily. Together we can make a difference in our

community.

Don't forget in this issue to vote for your choice in Officers and Board. The New Officers and Board take over in March. So get those Ballots in.

I hope you all had a wonderful Holiday season and are all ready for the exciting year ahead.

President Beatty Museum and Historical Society  
Mary Revert

### In This Issue of the Quarterly

President Message -----	Page 1
History of the Museum -----	Page 2
Welcome New Members -----	Page 5
Springdale Remembered -----	Page 5
Donations and Loans -----	Page 9
Clampers in Beatty -----	Page 10
Election Ballots -----	Page 10



417 W. Main St. - P.O. Box 244 - Beatty, Nevada 89003

775-553-2303

<http://www.beattymuseum.com>

## History of the Beatty Museum And Where We Are Going

With all the new expansions and improvements happening at the museum right now. Thought everyone would enjoy reading about the **History of the Museum**. For you new members, it will help you see what a dynamic Museum and Historical Society you have joined. So walk with me down memory lane as we go back in time to 1995.

The Beatty Museum and Historical Society have remained a presence on Main St. since 1995. Started in a small cottage on Claudia Reidheads' property, it has grown to the building now standing at 417 W. Main St.

In 1995, the founders of the Museum decided that something needed to be done about preserving the history of Beatty and the surrounding area before it was too late. Mary Revert, Vonnie Gray and Claudia Reidhead put their heads together, gathered some artifacts and private collections and started a small museum. Of course, what better place to have a museum than in a cottage that had been moved from Transvaal. A small mining town from the early 1900's. At this point, most of the displays were from the private collections of these three women with a vision. Pictured below is the 10' x 20' two room cottage.



Within two years the cottage had become too small. With collections being donated and put on loan, people volunteering to help. A larger building became necessary.

In 1997, the women secured the use of the old water building. Again, another historic building that had been brought to Beatty in the 1940's from Death Valley.

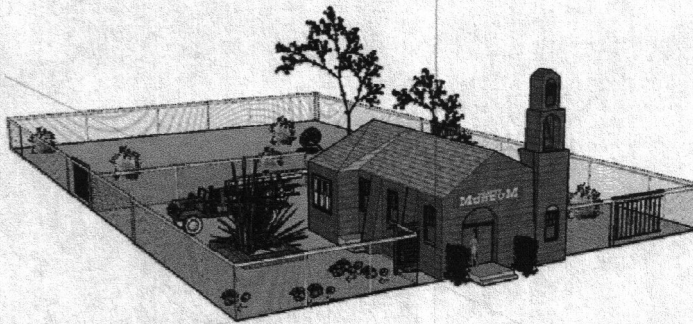


Once used as a barracks for the workers during the depression, it was about to take on a new task. This building was twice the size of the original cottage. As people in Beatty took notice that its small museum was open more hours, new exhibits and collections started to come in. Again, the little museum was becoming crowded with exhibits and recourse materials.

In 1999, the Board of Directors of the Museum, with the help from the Nye County Commissioners, secured St. Theresa's Catholic Church and 10 lots of property from the Catholic Dienes. The Beatty Museum and Historical Society now had a permanent home. Built in 1955 by volunteers from Beatty and Nellis Air Force Base, the Church was dedicated to the 49'ers, which was the dream of a priest who traveled the desert area. What better use for such a building dedicated to part of our history, to be used to house that history for scholars and public alike. After securing the building, moving the collections into the building, The Board of Directors sat down to review and plan the future of the Museum.

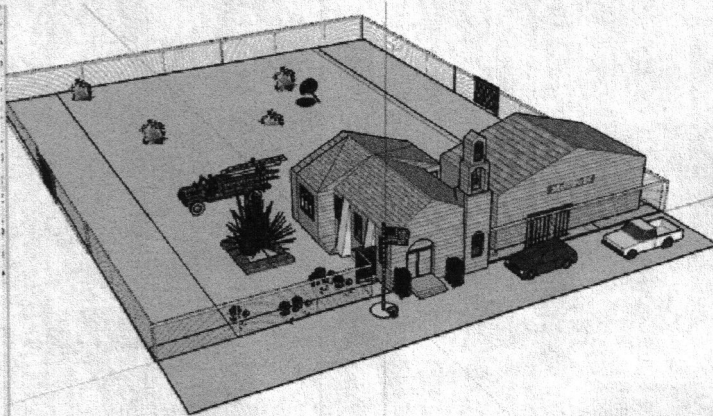
**Phase One:** Fencing the property, applying for a 501c3 status with the Internal Revenue Service, starting the cataloging process for the collections, web site for the Museum.

In 2000 with a grant from BGID, fencing was accomplished and donations started coming in for the outside. Equipment that dug the first ditches at U.S. Ecology, equipment used in and around local mines from 1905 until as late as the 1950's now found a permanent home.



In 2001 the Beatty Museum was granted its 501c3 status from the Internal Revenue Service. With a grant from Revert Inc. we were able to purchase "PastPerfect" Museum Software for the cataloging process to begin. Web site created showcasing exhibits, photographs and history.

**Phase Two:** Expansion of building, library and reference materials, displays organized into vignettes.



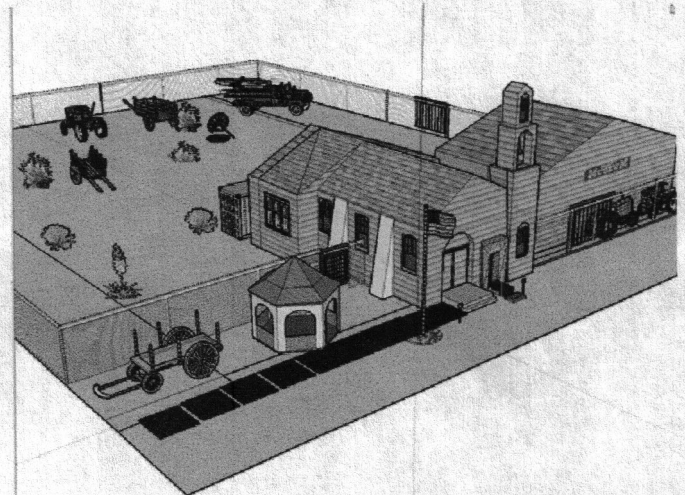
2002 - With a grant from the Nye County Commissioners and a donation from the Parson's family, the addition to the Museum was made possible. With new collections coming in every day, filling it would not be a problem. The Museum was now able to tell a story with the collections organized into vignettes and special areas of interest. With the new building we were able to open a small area to readers, scholars and the public for reference books and some materials.

2003 to 2006 - The museum continued receiving collections for exhibits, stabilized hours and was able to hire one employee using ½ of 1 percent of the room tax collected in

Beatty. During this time the Beatty Museum received two Awards from the Governor of Nevada for Tourism.

2007 - With the current employee at the museum, we have received many compliments on its upkeep and cleanliness. New maintenance personnel have volunteered and keep things running smoothly along with knowledge of dynamic displays. The Beatty Museum now has a full time volunteer Curator. It was recognized by the American Association of Museums and the Nevada Museum Association. The Beatty Museum has acquired two micro film readers, 4 rolls of microfilm of old newspapers in this area, and one computer to be used in the research center.

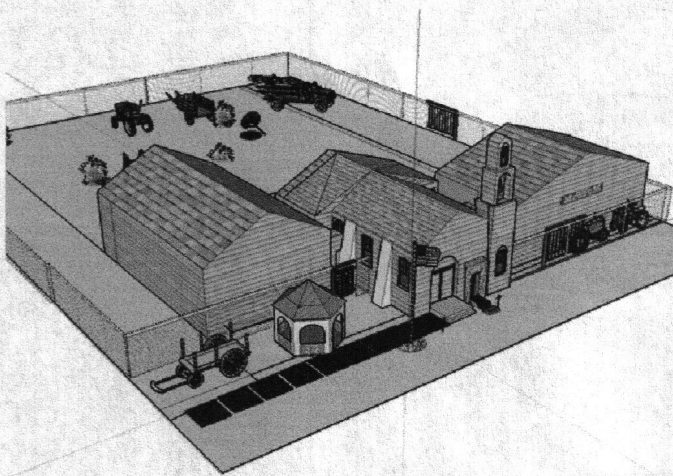
**Phase Three:** Landscaping



2007 - 2008 - This phase is currently in progress. David Spicer from Boiling Pot Mine supplied landscaping rock for the parking area and front of the Museum. Supplied the equipment for it to be leveled and smoothed. Parking blocks were put in place by Maintenance. A mine display now graces the front of the building to bring attention to the museum and hopefully make it seem more tourist friendly. With a grant from the Town Board in Beatty the museum has the Gazebo and materials to build the foundation. The process should start the first weekend of January, weather permitting. With a donation of material from Boiling Pot Mine, Equipment from the Dairy in the Armargosa Valley and manpower from Mr. Matheny from Ash Meadows the ground next to the museum will

be filled in and leveled for the gazebo and displays. A fundraiser was started for the memory walk (engraved bricks) for the front of the gazebo. Blank bricks were donated by Cinder-Lite Block Co. just outside of Beatty to make a complete walk possible. Everything is in place waiting at this time for the leveling off of the ground. (Note: At the time of printing this newsletter only the placement for the Gazebo has been leveled.)

**Phase Four: Research Center and Archive Room**



With the ever expanding collections and research material, it has become necessary to expand again. To keep from having to continue to build, an archive room is needed. Collections could then be rotated in the exhibits and stored safely if not on the main floors. The research center could house materials, micro film readers and computers for scholars, readers, general public and school children of all ages. With the cut in budgets it would allow a primary and secondary recourse for the children of Beatty. It would allow an area in which to study and explore. Also doubling as a special project and or program area in off use. Programs could be given at least once a month for the general public to enjoy and learn the history of their area and Nevada. Contact has already been made with several scholars, The Nevada Arts for Historical Reenactments and special programming. This would not only enhance the Museum but would provide necessary

infrastructure to the town of Beatty and its citizens. Offer a wider view on the area to tourists and benefit the educational development of the children of Beatty and the surrounding area.

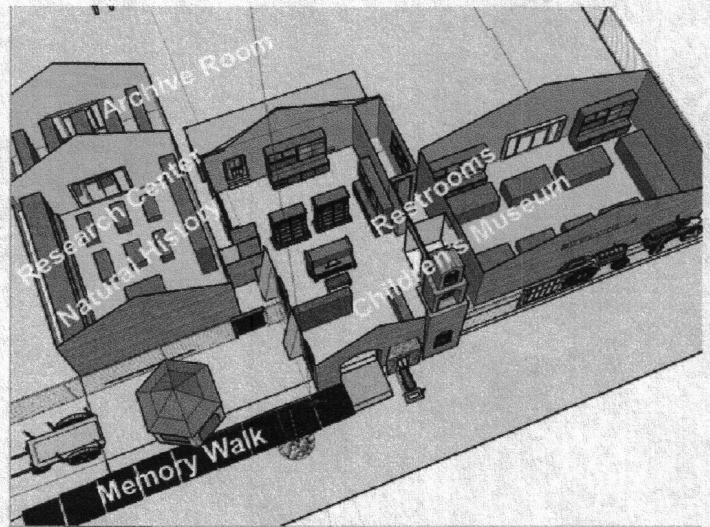


Diagram showing new section with archival room in the rear of research center.

**Phase Five: Natural History Section, Children's Museum, Public Restrooms**

Discussion with the State Museum in Carson City have alerted us to the availability to receive exhibits for a Natural Museum. Animals and reptiles indigenous to this area will be sent on long term loan for display. This can be accomplished along one wall of the Research Center. There are several area's within the museum that can be closed off from the original expansion to be used as a children's hands on museum. A small area that will benefit children of all ages and allow them to experience history at a level they will enjoy. There will also be a need at this point for public restrooms. Please see Diagram above.

Where do we go from here? Only time will tell as we become the biggest little museum in Rural Nevada. Offering something to tourists, scholars and children. Ever expanding and bringing education, preserving history and records for the Bullfrog Mining District and surrounding areas.

I hope you enjoyed this small glimpse into the Beatty Museum and Historical Society. Remember, it is you, the members that makes the Museum possible.

## Welcome New Members

Let's make them all feel welcome. Without the support of our membership and the volunteers, we would not have a Beatty Museum.

David Spicer, - Boiling Pot Mine - Beatty, Nevada

Cind-R-Lite Mine - Beatty, Nevada

Bill Marchand - Beatty, Nevada

Shoshone Museum - Shoshone, California

Pat & Arden Houser - Pahrump, Nevada

Barry & Karen Jacoby - Beatty, Nevada

Rick Schrier - Redwood City, California

Bob Planthold - San Francisco, California

Robert Hammes - Gualala, California

If I missed anyone I do apologize. You may have joined in time for the next newsletter.

Reprinted in Newsletter with permission. Thank you Jere for such a wonderful story and a step back in time.

### **SPRINGDALE REMEMBERED**

A Brief Sketch of C. F. Compton's  
Nevada Experiences  
1906-1907

by  
Jere Baker

Claude F. Compton was my grandfather, and this is the story of his coming to Nevada in late 1906 in hopes of making a successful business in one of the mining camps located in the new booming Bullfrog district. He is credited with the first store in the new townsite of Springdale where he ran a mercantile out of a large wood-frame tent. But it all came to an end when he called it quits by the summer of 1907 as a result of his wife not wanting to live in Nevada.

In writing this story the author had three primary sources to draw upon. The first and most important was a typed, one

page, reminiscence Claude Compton wrote on May 25, 1960 for his nephew Madison Compton. This brief text provides a fair amount of information on Compton's activities during his eight month stay in Nevada.

The second source was provided by James P. Compton, Claude Compton's youngest brother who was interviewed by the author on April 16, 1972. Although James Compton was 87 years old at the time of the interview he was still able to recount some interesting facts regarding Claude Compton's wife and her brief stay in Nevada. As well as recalling his visit to Springdale in May 1907 in a letter of May 20, 1960. The final source for this story to help fill in all the gaps were the Beatty and Rhyolite newspapers for this time period.

### **Part I**

One day in November 1906 Claude F. Compton left Las Angeles by train bound for southern Nevada in search for a new business opportunity. Thirty-one-year-old Claude Compton and his wife Mabel made their home in Tropicco, a small southern California town a few miles north of Las Angeles. Compton had settled in Tropicco in 1904 where he established a real estate business with a partner named Ben Spear. Together they developed the Compton-Spear Track in anticipation of the Pacific Electric Street Car line to pass along their property. Later, Compton developed the Compton Track in Tropicco, but his real estate business fell off sharply by mid 1906 when the Compton Track failed to become a big money maker. Compton was ready to look elsewhere for a more promising opportunity, and of the first places he choose to look was the new Bullfrog Mining District in southern Nevada. The Bullfrog district had surged to national prominence in 1905, and by late 1906 the district's newest townsite making the news had come to Compton's attention, enough so, that he was ready to check out the opportunity for establishing a mercantile business. Compton was not without experience, for he had run a successful general merchandise store in Arizona, so off he left for the Bullfrog district in hopes of

opening up a large store at the new townsite of Springdale, Nevada.

Claude Compton would write .....*To get to Springdale from Las Angeles I first took the train to Las Vegas. There wasn't a thing in Las Vegas then but a train depot and a small settlement of tents and a few wooden buildings. At Las Vegas is where you branched off on the Las Vegas & Tonopah Railroad going up the valley of the Amargosa River, \*dry except in the winter floods) to Beatty, then by auto stage to Springdale 10 miles north of Beatty. The country around Springdale was lined with miners as there was a great boom then. There was a very large spring there and a large ore mill was planned to be built soon. I became acquainted with the man that owned the townsite, a Mr. Lidwell who was offering free lots to merchants. I was deeded a lot for my store on Springdale's new Main Street as laid out by Lidwell. Springdale then only had a scattering of tents.* (C.F. Compton May 25, 1960)

In July 1906, thirty-two-year-old Albert L. Lidwell purchased the Indian Joe ranch at the head of the Oasis Valley and platted a townsite where the Goldfield-Bullfrog Auto Stage road passed the ranch property. Lidwell and several partners incorporated the Springdale Town and Land Company in October 1906. Besides actively promoting his new townsite, Albert Lidwell also had a large number of mining interests in the Bullfrog district which included the Springdale Mining Co. and the Springdale Mill & Reduction Co. (1)

If Compton needed a good reason for establishing a business in the new townsite of Springdale it was provided by the anticipated arrival of the Bullfrog & Goldfield Railroad. Springdale was to become a train stop on the new Bullfrog & Goldfield Railroad line to run between Goldfield and Rhyolite. (2)

Compton returned to Tropic, California where he closed up his real estate office and rented his house under the care of his brother James Compton who had moved to Tropic in 1906. Before returning to Nevada, Compton's wife left for

Kansas where she would stay with her father until Compton had everything ready for her arrival in Springdale. (3)

## Part 2

Returning to Springdale by the first of January 1907, Compton found that the Bullfrog & Goldfield Railroad Company's grading crew had established a camp at the east end of Main Street, with grading having been complete several miles below Springdale. (4) Compton would begin erecting a wood-frame building for his new tent store.

Compton .....*I had a large (very wide and long) tent that was made for me in Los Angeles. I had ordered my goods; a select line of mining supplies, groceries, etc. before I left Los Angeles and held them until I got my store built. I built a wood frame for it and put it up. I put in a wood floor and three foot walls with a door and window at each end. When the canvas tent was stretched over the framed top and fastened on the outside walls, this mad a real building for a store.* (C.F. Compton May 1960)

Shortly after he began construction of his store, Compton made his first trip to Rhyolite where he joined Albert Lidwell for the experience of visiting the largest town in the Bullfrog Mining District, where they arrived on January 15, 1907.

Compton .... *Up west from Beatty where the big gold mine was struck that caused all the excitement was the town of Rhyolite, and the railroad was already built up there from Beatty when I visited there. The passenger train came right up to Main Street where a station had been established. Rhyolite's streets were busy with wagons, pack mules, autos and people. Rhyolite had a large number of saloons of every size. There was one saloon 60 feet long with a bar extending clear down one*

side with 8 or 10 bartenders waiting on the customers and the house was packed full of miners. The railroad depot, bank building and many stores were A-1 well built, many of them were stone buildings. The population was 8,000 at that time. (C. F. Compton May 1960)

While in Rhyolite a reporter from the Rhyolite Herald caught up with Compton and Lidwell and noted their arrival in the January 18, 1907 issue, which read....."**C. F. Compton and A. L. Lidwell were in from Springdale Tuesday. Mr. Compton will install a stock of general merchandise and mining supplies in a new store building he is erecting at Springdale. Mr. Lidwell was exhibiting some fine looking quartz taken from one of his properties near Springdale.**"

Compton....*When my supplies arrived at the railroad freight depot at Beatty, Mr. Lidwell lent me his team and wagon and I did all my own hauling from Beatty, and I soon had my store fully stocked and ready for business. In Springdale the miners all wanted me to put a saloon in the store, as I could have made twice the money the store would have made me, but I would not do it. Then one of the prospector-miners put in a small tent saloon and did a land office business. Combined with his mining interest he soon became one of the wealthy businessmen of the area. Some of the tender-foot fellows there would not go near the saloon and condemned it. At Springdale the water had lots of alkali in it and I was unable to drink it. I had my tent supplied with water barrel service at only twenty-five cents a barrel.* (C. F. Compton May 1960)

The arrival of the Bullfrog & Goldfield Railroad was the big event for Springdale when passenger service from Goldfield to the rail terminus at Springdale began on March 17, 1907. With a railroad construction camp established at Springdale, track laying continued on toward Beatty where it would be completed by late April. The Bullfrog & Goldfield Railroad's final destination would be Rhyolite, by June 1907.

With Springdale's Main Street as the main thoroughfare to

reach the Bullfrog & Goldfield train stop, as many as five or six auto stages as well as team stages would arrive by noon to meet the 1:00 o'clock train. The incoming passenger train would stop only long enough to unload and load up again then return to Goldfield. (5)

By March of 1907 Springdale had two saloons, a restaurant, another boarding house, a good size tent hotel, a laundry and a post office with L. A. Lidwell as the newly appointed postmaster. The March 22 Rhyolite Herald also reported that ...."**Storekeeper Compton was said to be doing a good business:...** Compton however lost his position as the only general merchandise business in Springdale when J. E. Dawson began conducting Springdales' second store at this time.

When the Bullfrog & Goldfield Railroad reached Beatty in late April, the railroad construction camp would follow, and Springdale settled down to a much slower pace.

### Part 3

Enter Mrs. Compton. Mable Compton moved up to Springdale that spring of 1907 to be with her husband, but after three or four weeks of living in a tent she left and moved back with her father in Olathe, Kansas. Mabel was not a strong person physically and had suffered poor health from childhood. The rough environment of tent life in a Nevada desert mining camp was just too much for her. Mabel had given her all to be with her husband, but life in Nevada was out. Faced with the dilemma of what to do with his store, Compton hit upon a plan that would enable him to keep his Springdale business and move back to Tropic with Mabel. Compton's younger brother, twenty-one year old James P. Compton had moved to Tropic in 1906 and was working as a clerk for a local mercantile company. Claude wrote his brother asking him to move out to Springdale and take over the running of the store. James would be given a partnership in the

business after six months if all went well. (6)

James Compton would write ..... *C. F. started writing me to quite Logan (mercantile in Tropic) and come up to Springdale, Nevada located in the Bullfrog Mining District. In May 1907, I did go. Springdale was a town made up of tents, with C. F.'s store being one of the better constructed. However it would have furnished little protection from the summer sun. I was there about two weeks when a letter from the folks told us that the doctors had given mother not more than a year to live. We talked it over and decided that I was the one that should go home and look after the folks.* (J. P. Compton May 30, 1960)

This put an end to Compton's plan for a partnership with his brother. Not wanting to spend any more time in Springdale, Compton put his lot and mercantile business up for sale.

Compton....*The man that had the first saloon bought me out and paid me cash. His wife was in Los Angeles and he sent for her. I sold out in June 1907.* ( C. F. Compton May 1960)

Claude Compton and his wife Mabel would make their home in Tropic once again. As for Mabel, her health only grew worse, and just over a year later she died in December 1908. Compton would marry Nellie Gray Poling, the author's grandmother, on August 20, 1911. C. F. Compton would live the last twenty three years of his life in Susanville, California where he died at the age of 87 in February 1963.

#### Endnotes

- 1) Rhyolite Herald Sept. 7, 1906, Jan. 4, 1907  
Bullfrog Miner - November 20, 1906
- 2) Rhyolite Herald Dec. 21, 1906  
Bullfrog Miner - Dec. 28, 1906
- 3) Interview with James P. Compton, April 16, 1972
- 4) Rhyolite Herald, Jan. 4, 1907
- 5) Rhyolite Herald March 15, 22, 29, 1907  
David F. Myrick, Railroads of Nevada and Eastern Ca.
- 6) Interview James P. Compton, April 16, 1972



Claude F. Compton 1908

Thank you Jere for sharing this wonderful story with us. For the new members, Springdale is part of the Bullfrog Mining District and privately owned. Larry shares the Springdale history with our Museum, and we hope to help him with his dream of a Springdale Museum on his property. Working together, we can make the Bullfrog Mining District come alive for everyone.

Well, I have said this before, and I am going to say it again. Send in your stories. I know we have members that are not only descendants, but amateur and professional historians. As you see in this submission by Jere Baker, a story about just one family, one person, or one store can effect the way we look at a townsite. Wow, Springdale came to life for just a little while. We helped Mr. Compton build his store and rooted for him all the way. What about your family history in the Bullfrog Mining District? What about your history in visiting the Bullfrog Mining District? We would like to hear from you. Come on everyone. Don't be bashful. You don't have to be an author, or a historian to create an interesting article. I'll be waiting to hear from you.



## Donations and Loans

We have had some wonderful donations and loans brought into the museum in the last three months. Just a few listed below.

Deed of Mining Claim from Indian Johnnie to Louis S. Finnegan on Oct. 21, 1905. Selling his part of the Shoshone, Shoshone 2, Shoshone 3 and the "Indian Johnnie" for \$5.00 - Donated by the Douglas County Historical Society in Gardnerville, Nevada

Large outdoor sign from the Burro Inn - Donated by Julie Mason, Beatty, Nevada

Otoscope, Stethoscope and Baumaumeter circa 1950's from the Nevada Health Center in Incline Village, Nevada

Saddles and Cow Skulls donated by the Younghans in Beatty, Nevada

Sliced Tobacco Can and Mint US Coins (3 sets) on Loan by Leon Abrams, Berkerly, California

3 pieces furniture, World Globe Classic Series, Various Farming hand tools, Hand Washing Machine, Posters from Death Valley circa 1930's Donated by Daniel Dinsmoor from Bishop, Ca.

1900 Upright Piano from the Aurora Bar in Springdale, Nevada and Large Bellows used in Springdale on loan from Larry Moog

Historical Atlas of USA Centennial edition Donated by Linda Edelman from Las Vegas, Nevada

2 Palates of bricks donated by the Cind-R-Lite

Block Co. for the Memory Walk - Lathrop Wells, Nevada

2 Saddles with bit on loan from Mary Pedon of Beatty, Nevada

1 47 1/2" x 36" Milo City Guide of America Tin map with advertisements circa 1950's on loan by Roger and Barbara Piatt from Ashland, Ohio

AP Gran Fire Brick circa 1919 Donated by Mingo Hendrickson of Beatty, Nevada

Oral History of the Beatty Library Donated by the Beatty Library, Beatty, Nevada

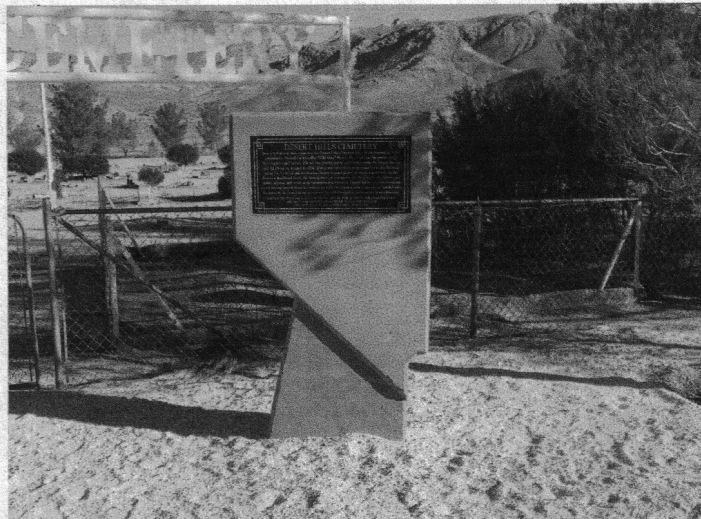
St. Louis Star Times Special Edition Dec. 8, 1941 "WAR DECLARED" on loan by Les and Kay Parsons of Beatty, Nevada

1941 1st, 2nd and 3rd edition of the Honolulu Star showing Attack on Pearl Harbor - 2 1874 New York Ledger Newspapers - 1882 Bodie Evening Minor - Magazine excerpt on John F. Kennedy - UNLV Book Landscapes and Aesthetics Corridor Plan Donated by Shelagh Davis of Beatty, Nevada

527 Volunteer hours in 3 months  
984 Visitors in 3 months

## Clampers set Monument at Cemetery

During Beatty Days 2007, the Queho Posse Chapter 1919, a Clamper Organization out of Las Vegas built and set a Monument for the Cemetery. Claudia Reidhead was there along with a few people from Beatty to watch the even.



The Plaque reads:

"Beatty's first and only cemetery, the Desert Hills Cemetery dates to the beginning of the community. Named for Montillus "Old Man" Beatty, the town was the center of the Bullfrog Mining District. The mining district got its start with a strike by Shorty Harris and Ed Cross on August 4, 1904. The green colored ore they found led to the Bullfrog name for the mine and the district. Beatty boasted plenty of water, a great need in the desert, a significant hotel, the Montgomery, a newspaper the Bullfrog Beatty Miner, and stores, saloons, and other stops for miners and travelers. Beatty has been a transportation center having hosted three railroads in its early days, and is now the Gateway to Death Valley. *Dedicated to the first, last and all who rest here. Their strength is the foundation of our community.* Dedicated this 28th Day of October, 2007 by the Queho Posse chapter #1919 - Ancient and Honorable Order of E Clampus Vitus in Cooperation with the town of

Beatty."

## ELECTIONS

So there we have it until the April/May/June newsletter, except for one more thing. Elections are now, so vote for your candidate. You can email through the website or call in your vote. But VOTE! Results in the next newsletter.  
 website: <http://www.beattymuseum.com>  
 Phone: 775-553-2303

Nominated for offices of:

President:	Mary Revert
Vice President:	Earlene Shipman Riley McCoy
Secretary	Claudia Reidhead
Treasure	Suzy McCoy
Directors	Barbara Piatt Bill Miller Clint Boehringer Helen Terry Ellen Boehringer

Note: We need 1 One year Director and 2 Two Year Director's - Vote accordingly

Appointed offices: FYI - These are not elected  
 Curator: Suzy McCoy  
 Maintenance: Riley McCoy  
 Sargent at Arms: Gary Hammes

Goodbye! Catcha Later! I'm Outta Here until next time.