




---

 NEWSLETTER FOR AUTUMN 2005, SEPTEMBER 1
 

---

Continuing in the tradition of mine information and details, a verbatim transcription (the handwriting is wonderful) of a:

**CERTIFICATE OF LOCATION**

This is to certify, that a mining claim named the Red Rock Quartz mining claim was located by Geo. Probasco, E.S. Chafey and E.H. Mather on the 18<sup>th</sup> day of February, 1905. Situated in Bullfrog Mining District, Nye County, State of Nevada, and about 1 ½ miles Northeast of the Davis Ranch, and about 1 ½ miles Southwest of the Howells Ranch and about one mile East of the Amargosa River.

We claim 1500 linear feet along the course of the mineral bearing ledge, lode or vein, extending 500 feet from the location monument in a Northeasterly direction, and 1000 feet in a Southwesterly direction, together with 300 feet on each side of the center of the ledge, for the entire length of the claim. The discovery work consists of open cut situated about 200 feet in a Northeast direction from the location monument and it's dimensions are 5 feet wide 16 feet long and 3 ½ feet deep exposing ledge, lode or vein in place.

The North West corner is marked by a monument 3 feet high inscribed "N-W- corner Red Rock Mine"; the Southwest corner is marked by a monument 3 feet high, inscribed "Southwest corner Red Rock Mine"; the Southeast corner is marked by a monument 3 feet high, inscribed "Southeast corner Red Rock Mine"; the Northeast corner is marked by a monument 3 feet high inscribed "Northeast corner of Red Rock Mine". There is also a monument at the center of each side line.

The discovery work has been done and the location completed since Feb. 18<sup>th</sup>, 1905.

Geo. Probasco  
E.S. Chafey  
E.H. Mather

Dated \_\_\_\_\_ 190\_\_

Filed for record May 18<sup>th</sup>, 1905 at 11:08 A.M. in Bullfrog Mining District Records at request of Geo. Probasco.

Filed at request of C.E. Bryson  
May 24, 1905, at 10 A.M..  
Recorded June 1, 1905 at 8:25 P.M.

Puddy Grimes Co. Recorder

(For those who are interested this claim is North East of Beatty)

## POST OFFICES

I was at the Library the other day and looking through Stanley Pahers book "Nevada Post Offices", found some really interesting Post Offices listed there, several from our area.

Amargosa the first one is really interesting, the opening date December 14, 1901 closing date March 21, 1902-this must have been opened for the ranches around the Oasis Valley.

Amargosa Post Office was the first one in this area, opening December 3, 1904, closing March 21, 1905, it was closed because there were too many post offices in a three mile area.

Amargosa was near Original, and the Bullfrog Mine(the first Bullfrog Mine). Approximately 3 miles So.West of Rhyolite. (also called Bullfrog, it was the first town of Bullfrog, before it moved

to the present site.) For a better history of this check

out Rhyolite, Suzy or Riley or Ellen or Clint will be able to tell you more.

Beatty Post Office, opened January 19, 1905 and is still in operation. (This Post Office was the only one that opened with a Postmaster, who could not read, Mr. Beatty covered this real well by hiring some one to read the mail for him!)

Bull Frog(or Bullfrog) opened March 21, 1905, closed May 15, 1909- This is one where the mail was distributed by the Postmaster reading the names out and handing the letter to the person, for the first few months. Mail was routed through Rhyolite to Beatty.

Gold Center, opened on January 21, 1905, closed November 30, 1910. Mail was routed through Beatty.

Gold Bar, Opened May 20, 1907, closed July 15, 1909, mail routed through Bullfrog This one serviced both the homestead mine and Gold-bar mine, also several other smaller mines in the area.

3

Flourine opened May 26,  
1908 closed July 15, 1909.  
Serviced several mines in  
Flourine Cyn.( near Crowell's  
mine.)

Springdale, opened February  
19, 1907, closed January 15,  
1912. Mail moved to  
Pioneer after P.O. closed.

Pioneer, opened March 2,  
1909, closed January 26,  
1931. Mail was routed  
through Beatty, and moved  
to Beatty after PO closed.

Thorp, opened June 15,  
1907, closed July 13, 1909.

Bonnie Claire(or Bonnie  
Clare, or Montana Station,  
this one had a lot of alias'),  
opened July 13, 1909 Closed  
December 31, 1931. Name  
changed from Thorp—Check  
the closing date, and the  
opening date, for both.

Carrera, opened May 24,  
1913, closed September 15,  
1924.

Wahmonie, opened June 2,  
1928, closed April 30, 1929.

Mail was a very important  
part the goldfields of this  
area, this was the only way

of staying in touch with the  
wife and kids back home(or  
the husband who couldn't  
leave his job, some of the  
prospectors were women,  
who braved the wild frontier,  
deserts to try and make a  
better living for their family  
or themselves.(Some really  
strong ladies!)

**Ribits....From Bullfrog Billy**  
Hello again,  
Claudia has asked me to  
toss a few sentences into the  
newsletter pot again. I was  
delighted to receive the first  
official "BMHS" newsletter  
produced entirely by Claudia  
and the Museum Staff. The  
"Home Grown" look and feel  
is a perfect fit for the  
Museum now, While Beatty  
has endured a population  
decrease in recent years,  
Long Beach has suffered  
with a population increase,  
but the Museum score  
remains: Beatty 1- Long  
Beach 0. Although  
numerous efforts at fund  
raising and meetings with  
various members of the City  
Council have taken place, it  
appears that the Long Beach  
Heritage Museum that has  
been in storage for ten

years, will now be forced to liquidate by way of auction before the end of September. Only a miracle will change the scenario. The importance of a History Museum can never be over emphasized. I encourage any Beatty resident that is not a member of BMHS, to please join YOUR Museum and if possible, volunteer as a potential Board Member or just give a little of your spare time to assist the Museum in whatever manner that is needed. It is especially important to have a History Museum, so young people can get in touch with the past and perhaps gather just that little bit of information that will help them with their future. As summer winds down, and hopefully the temperature does too. Zettia and I are keeping you in our thoughts and look forward to seeing you in the not too distant future. Stay well and keep that Museum in it's rightful place.....number one.....Ribit

**NOTES FROM OUR PREZ**  
 Well July was kind of messed up between people being sick, being gone, breaking bones, all of those mundane

little things our meeting got postponed for a month, (no car wash either, but that was not our fault, the place we were going to use decided that they didn't want the responsibility for it, so we will wait to get that done another time.)

The next town celebration will be Beatty Days October 15.

Need to thank Gary Senior, and Clay, for fixing the ac at the Museum. Sure feels good to walk into the cool. In fact we all do every time we walk into the building.

On an interesting note, Elaine Richardson of Las Vegas, the current owner of the old Revert house(her grandparents house) will be restoring it to it's 1905 glory, when it sat high atop Nob Hill in Rhyolite, and it will be furnished with some of the original furniture that was in it then, When it is finished it will be opened for viewing by appointment only through the Museum. I can hardly wait to see it done.

Also in the same note of interest, Mary said that they

will be restoring the old Beatty Ranch house, it will be open to the public also. After the restoration..

The new computer for the Museum has been purchased and installed. Kristy is working away on it. The new phone has also been purchased, now she can actually talk on it long enough to answer a question, (faulty wires in the phone, not tired batteries.)

Thank you to Bobby and Ann Marchand, for the tin tiles from the Rhyolite School, that they had Mary bring in for display.

Our flag wore out, and the rope broke, the flag was replaced by Riley and Suzy McCoy, THANKS YOU TWO the rope will be picked up by the next one going to Vegas or Pahrump.

That's it for this time --Max

Hi Folks,  
As the new editor for the news letter I am a failure, I owe an apology to the membership, and to the Revert Family, I had not thrown out the first draft of the front page, of the last newsletter and when I had

finished the rewrite, there were two front pages laying on my desk, and when I picked up the papers to take to Kristy to run off at the Museum, I picked up the wrong one. So here are the first two paragraphs as they should have read:

[New Years Eve 1929 Albert Revert and his son Arthur arrived in the Oasis Valley, they were looking for a place to start over. Albert, had lost what was left of his lumber business with the fall of Wall Street. A very severe stretch of bad luck had dog-ged him for some time, first there were the fires that had destroyed the lumber mills in Verdi and several of his other lumberyards through out Nevada, (which had not been covered by insurance) followed by the Wall Street disaster. Now his wife was ill. Leaving two of his sons with her in San Francisco, he had left her in the capable hands of the Dr.'s, went looking for a new place for them to live. She was to join him with their other two sons and daughter, when she felt well enough to travel.

Having made several very profitable trips to the Bullfrog area during the gold rush, providing lumber to several of the lumber yards here. Even at one time owning one. He felt this might be a good place to relocate.]

As you can see there is quite a difference between them, and I feel very foolish for not reading them as I was rushing to get them printed and out. I promise it will not happen again. Please accept my apology.

On to other things.

I went to Rhyolite the other day and am pleased to report that the Bottle House repairs have been completed, it looks almost as it did in the 1940's which took me back on a long memory trip. Thanks to the caretakers, Clint & Ellen, and Suzy & Riley, BLM, and several other groups it is great to see it looking this good again. You must come see it soon.

We still need volunteers to help out at the Museum, especially in the yard. Also to clean the weeds from Underground Church yard. It is a real hazard from dry weeds.

Congratulations to Tom Shipman, he had eye surgery, and now he can see the pretty girls to chase them. It was good to see him smiling again, I know Erlene feels better too.

I want to thank Bill for being kind enough to give us another Ribits column, his opinions are valued, I know that when I need their advice on the newsletter I can count on it.

Usually around this issue we run a School piece. Not this time, it's Post Offices. Thank You for your patience with me.....Claudia

#### DONATIONS

4 Tin roofing tiles from the School House in Rhyolite from Bobby and Ann Marchand. 8/12

John and Gennie Lisle.  
1 Drum, that belonged to Tommy Thompson-  
1 bellows- approximately 360 Burro Race Pins. 7/22

#### CONTRIBUTIONS

IN MEMORY OF BILL SULLIVAN.  
\$25.00  
\$50.00 From Karen Grey  
\$100.00 From Bills Brother.

7

If you have been in to visit us once, great! It is time to visit again, we have received many new items that are on display, we are always evolving.

#### **LITTLE KNOWN FACTS**

James Warren Nye- Who had been commissioned by President Abraham Lincoln on March 22 1861 as Governor of the Nevada Territory, was also the first sitting Governor for the State of Nevada.

Mr. Nye (for whom Nye County was named) served as Nevadas first appointed Governor for one month and one week, until the first elected Governor, Henry Goode Blaisdell, took office on Dec. 5, 1864. (reference Nev. State Historical Archives)

#### **FROM SUZY**

**(IN RESPONSE TO CONTINUAL NAGGING)**

**Ok, Ok, here it is,**

Many thanks to the Beatty Museum and Historical Society , and the Central

Nevada Museum, for their generous donations of bottles, let us not forget Claudia Reidhead, and yes even the Friends of Rhyolite, who pitched in to donate bottles.

After several years in the making, a cooperative effort between Bureau of Land Management in Tonopah, and Rhyolite Preservation Society, with Caretaker participation the Bottle House is DONE .

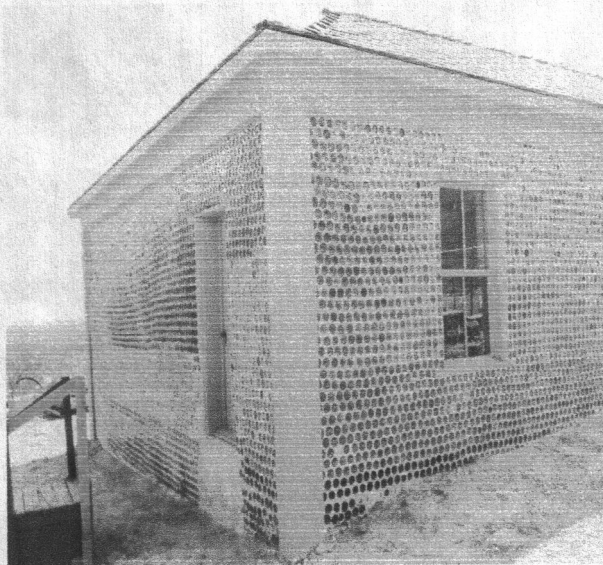
Contract work was done by Reva Murphy Association out of California. It took 22 days to complete the task. But look at what we have now. The gables are full of bottles again, the brace is down, and all is looking good again. Project was started on July 6, 2005 and was finished on August 12, 2005. Yes I know that is more than 22 days, but these are working days, the guys needed a few days off.

Next project is to restore the inside. This should take place next winter, Cross your fingers. Pictures are being posted on: [rhyolitesite.com](http://rhyolitesite.com), so check it

often for the rest of the story.

There will be an open house at the Bottle House Oct. 29-31

Suzy McCoy  
Copyright August 2005



**The wall is flat, now no brace to hold it together ! ( first time in Years)**



**North Wall & west Wall Look  
Bottles fill the Gable now!**

**PS The Museum will have a  
bake sale during the open  
house.**