

Beatty Museum And Historical Society



Summer 2004

VOL 10 NO 1



Inside this issue.....

Farewell column from Mary Revert

Meet your new President.....Maxine

Montgomery-Shoshone Mine History

Rhyolite Update from Suzy McCoy

Meeting Minutes Highlights

Donations and Remembrances

Centennial Preview

RIBITS from the editor

MESSAGE FROM MARY

Hello Everyone:

This is the last time I will be writing to you. I just want to take this time to say thank you for four wonderful and busy years. (Sometimes it feels like 10 or more)

When you elected me as President, we had just acquired the Catholic Mission building and were working to get it fixed up for the public to come and visit.

Over the years, we all worked very hard to expand and build the Museum. Those who worked so hard with me all know who they are and I thank them all from the bottom of my heart for the hard work and dedication.

When you stop to think about it, the growth of this Museum has been phenomenal. We have gone from a small room of 8' X 15' to the wonderful building we are in now. The expansion that happened last year calls for thanks to some very special people like Les and Kay Parsons who donated the building expansion, the County Commissioners who paid for the labor to put it together, and Tom and Erlene Shipman who contributed a huge collection in memory of Tom's first wife Irene.

Thanks to all for the gifts, donations and displays on loan to the Museum from personal collections and how wonderful to have all the visitors from all over the world who have come to see and comment on what has been accomplished here.

Those of you who are members and haven't come to visit lately, really must come and see the progress we've made.

The outside exhibits still need some work, but there is only just so far you can stretch a few bodies. We really do need physical help from some additional volunteers.

We now have a paid employee. Her name is Kristy and she is the one you will talk to when you call on the phone. She has become the backbone of the Museum. She meets and greets people everyday as well as cleaning and caring for the exhibits.

Our new President Maxine is a relative newcomer to the organization, but she is a truly welcome addition to our Board. She will do a good job as President.

Did you know that we have won the Governors Award for Tourism twice? We have been listed as a place to see in the travelogs of Germany, England and Italy. We have been mentioned in a French Travel radio program as a place to visit as well as on a Dutch TV travel show. How is that for coming a long long way?

Thank you again for the faith you had in me. All the hard work has paid off in a beautiful Museum. These four years as President and the previous five as Vice President have really been a grand experience.

Mary Revert

**MEET OUR NEW PRESIDENT
MAXINE MAKINSTER**

Maxine Makinster: a widow lady who moved to Beatty two years ago from Nampa, Idaho where she had lived for 12 years, moving there from Buffalo, Wyoming. She was born and raised in Upper Michigan.

She is a Mother of five, Grandmother of 12 and Great Grandmother of three. Upon her arrival in Beatty, she opened the Hair Gallery, operating it until about a month ago when she decided to retire.

She is also First Vice President of the Beatty Lions Club as well as current Secretary for the Rhyolite Preservation Society.

Her interests include: fabric painting, fishing and almost any outdoor activity. She is a history buff and has an interest in antiques.

Currently she is making several trips a week to Las Vegas with her sister who is under a Doctor's care. She will be able to do a Presidents Column after her life settles down a bit and will give you an idea where she plans to go with the Museum.

RHYOLITE NEWS

by
Suzy McCoy

A wedding took place in April of this year. Judge Sullivan performed the ceremony at the site of the Presbyterian Church in Rhyolite. It was held in conjunction with the Hog (Harley Davidson Motorcycles) Rally in Beatty. Photos will be posted on the website (www.rhyolitesite.com) sometime this month.

The Bottle House contract was extended until the middle of May. Work should start by the end of summer or early fall. At this point we understand that nothing is to be done on the inside. Just stabilization and replacement of Bottles. Thanks to the Beatty Museum, Claudia Reidhead and the Central Nevada Museum, we have enough bottles to complete the project. Many thanks to all.

Clint and Ellen left a little late this year, they stayed until the 20th of April to help with special projects and just enjoy Nevada. We will miss them, but they will be back by the 16th of October this year to help with Rhyolite during the Beatty Centennial.

MONTGOMERY SHOSHONE MINE

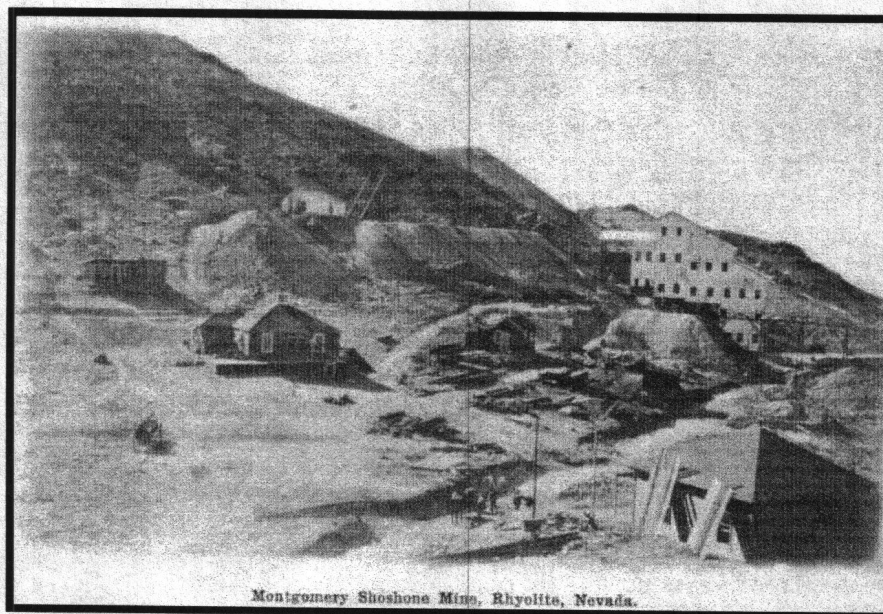
by
Claudia Reidhead

In September of 1904 at the beginning of the Bullfrog Gold Rush, Bob (E.A.) Montgomery had come South from the Goldfield and Tonopah areas to see what all the excitement was about. Arriving in Beatty around the first of September, 1904, he hired a Shoshone Indian called "Hungry Johnny," to find and stake some claims for him. The location notices for the Shoshone and Indian Johnny claims were dated September 6, 1904. The claims were filed in Tonopah in November, 1904. The richest ores weren't found until in February of 1904, at which time Bob and one partner, Edwards, bought out another partner Al James. Bob bought out Edwards interest and sold it to Malcom McDonald, who became the Mine and Mill Boss for the Montgomery-Shoshone Mine. Bob became President of the newly re-organized company.

The Montgomery-Shoshone Mines Company formed in early April of 1905 and soon became the hottest trading mining stock on the market selling for \$3.00+ a share. The mine was soon shipping ore out by the 50 ton carload to the Mill in Salt Lake City. Bob and his wife Winnie (a petit 240 pound lady) rode to Salt Lake with the first shipment rumored to be averaging \$2300.00 per ton. (bear in mind they only shipped the highest grade ores)

After much fanfare and some legal troubles, the mine was sold to Schwab in 1906 for a reported \$2,000,000 plus stock. Bob said he only received \$1,000,000 and 500,000 shares of stock. If he had sold them in the next few months when shares were running \$23 per share, he would have made a killing.

The Montgomery-Shoshone mine was perhaps the largest production mine of the Early Gold Rush and had one of the most colorful beginnings of many of the mines of the area and unlike some, was not a fraud. Although in the end, only the early investors made any money from the mine.



Montgomery Shoshone Mine, Beatty, Nevada.

MEETING MINUTE HIGHLIGHTS

The following are notes from meetings held since the last BMHS newsletter.

Mary read announcement that we received the Governors Tourist Award for the second time. Mary paid for appraisal of building and contents and will be reimbursed.

Suzy McCoy as Pro Tem Treasurer. Auditing committee appointed: Erlene Shipman, Ellen Boehringer and Tom Shipman. They will meet, do audit and hand books over to Suzy.

Discussion on how to get more members: Open house program including youth groups, redo letter to improve membership, conduct open general meeting with refreshments.

Appraisal on Museum collection completed. Value set at \$346,930.00

Need to raise insurance as insurance is only \$10,000 under County Umbrella.

Election nominations: President Maxine Makinster, Vice President Tom Shipman, Treasurer Mary Revert, Secretary Vonnie Gray, Two Year Director Erlene Shipman, One Year Director Claudia Reidhead, Kay Parsons, Cecil Teague, Riley McCoy and Bombo Cottonwood.

Museum donating bottles to the Bottle House Restoration project in Rhyolite.

DONATIONS & REMEMBRANCES

From Leon Abrams: Three uncalculated Carson City Dollars. Also our new Museum Pins @ \$5.00 each with all proceeds going to our General Fund.

From Alphaeus Bruton: A railroad hand truck.

From Anonymous: Underwood Typewriter and a 1940's/50's style wheelchair.

From Bombo Cottonwood: Collection of five small baskets made by Minnie Cottonwood.

We fondly remember those that have passed on in recent months. They were all active members who helped make the Museum a success.

Jacob Oh
Ralph Lisle
Jack Hoyer
Dwight Tobin

Dave Lottman
Bill Terry
Opal Revert

BEATTY CENTENNIAL PREVIEW

Get ready! Beatty will celebrate like never before starting October 15th. The following is a sneak preview of some of the activities that will take place. A full report on the Centennial will be in the next issue of the Beatty Newsletter. But for now, just to whet your appetite.....

MINI POW-WOW
SILVER TAPPERS
BAR-B-Q
PARADE
POKER RUN
BED RACE
SHOOT OUTS
NATURE CONSERVANCY TRAIL TOURS
HISTORICAL TOURS OF BEATTY AND
RHYOLITE
ANTIQUÉ CAR SHOW

ARTS AND CRAFTS VENDORS
BATTLE OF THE BANDS
FIREWORKS
BEATTY GRAND PRIX MOTOR CROSS
GARDEN RAILROAD SMOKE HOUSE BAND
AND SMALL ENGINES
BURRO RACES
HORSESHOE TOURNAMENT
DUTCH OVEN COOK OFF
GOLD PANNING

RIBITS FROM THE EDITOR

BULLFROG BILLY

Welcome (finally) to the first issue of 2004. Using the old saying "no news is good news," we have lots of good news to report in this issue. Perhaps the biggest event that is coming later this year is the Beatty Centennial. We have teased you with a preview look at some of the activities that are planned for this monumental event. There will of course, be additions as well as deletions from what you see above as the date gets closer. We plan on doing a BIG issue about the Centennial later this year, with the target date on or about September 10th, which will give you the final details and time to plan to be a part of the celebration. Mary Revert has a farewell column as the out going President and you will find an introduction to our new President, Maxine. Maxine will have a column in our next issue. Election results are posted at the Beatty Museum website: www.beattymuseum.com, and I might add that you should visit that website often as well as www.rhyolitesite.com to keep current on all the news. The BMHS newsletter has become more expensive to produce as time keeps moving on and it is a pretty safe bet that we will be doing two, maybe three issues this year to keep expenses down as much as possible. For local Beatty residents, news is available first hand. For members outside the Beatty area, your best source of current news is the web sites and whatever we can provide on a timely basis with the newsletter. We are now using another source for printing the newsletter as our local vendor has seen fit to triple the price of copying the newsletter, an expense that is prohibitive, thereby resulting in reducing the number of issues per year once again. Claudia has provided us with another look at the Montgomery-Shoshone mine and Suzy McCoy brings us up to date on what is happening in Rhyolite. Several Board meetings have taken place since the last issue and we have printed the highlights of the minutes from those meetings. Some nice donations have come in to the Museum and we have those listed for you as well as listing in remembrance, some of our outstanding members who helped in making the Museum a shining star in the galaxy of Museums. Hope you enjoy this issue and we look forward to seeing all of you at the Centennial celebration this coming October.....RIBIT!