

Beatty



Museum

and Historical Society

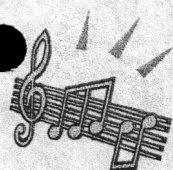
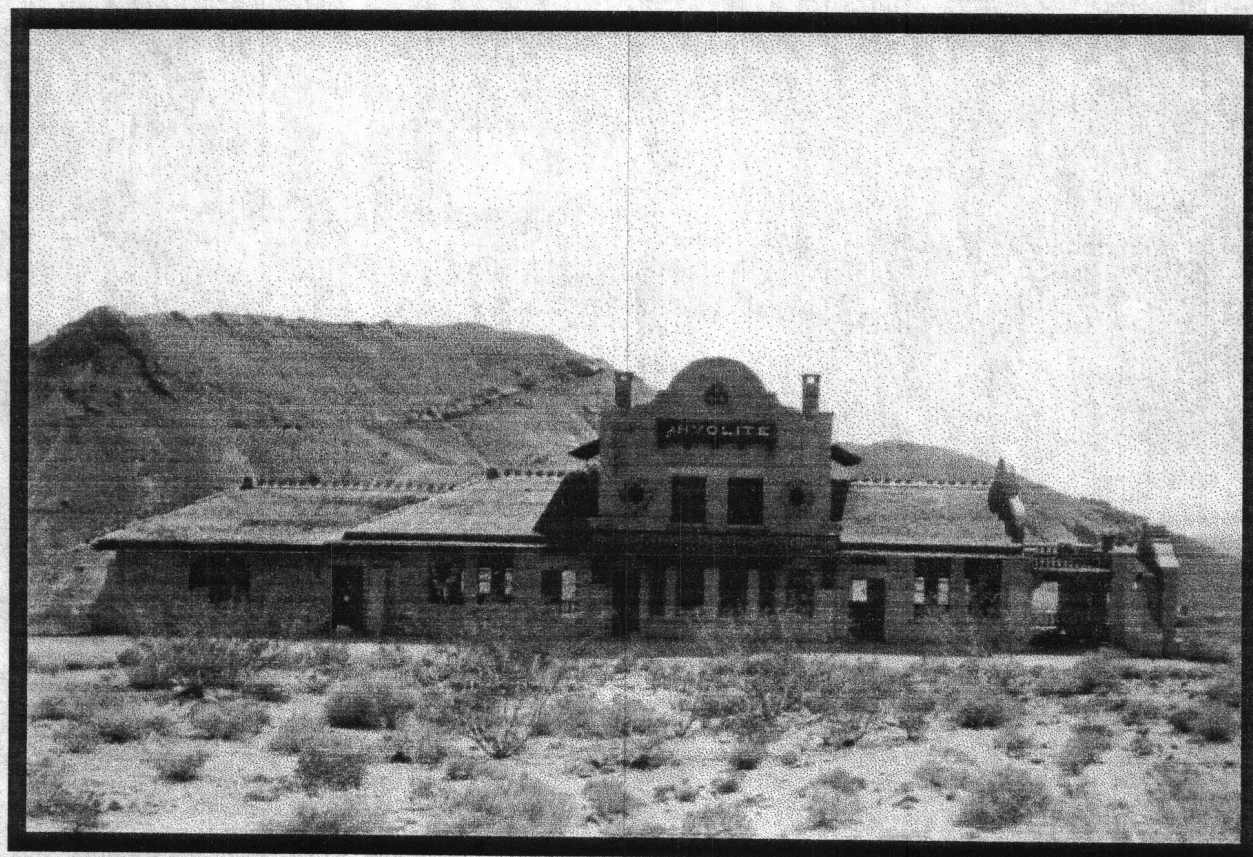
Vol.8 No.1

NEWSLETTER

SPRING 2002



*What Good is Sitting Alone in Your Room*



*Come To the Jamboree  
April 5<sup>th</sup>, 6<sup>th</sup> & 7<sup>th</sup>, 2002*



## A NOTE FROM THE PRESIDENT

MARY REVERT

A lot is going on here. We allowed the Museum to be closed for two weeks over the Holidays so we could catch up with my family and Dave could take a much earned rest. This also gave us a chance to regroup and get ready to take on the county again for a grant to build a metal fire resistant building to house the Shipman collection which we will be getting, starting on the 19<sup>th</sup> of January. This extensive collection will span everything from mining to ranching, from the cradle to the grave, the needs and luxuries of the turn of the century (I mean the turn of the last century). From the late 1890's to WWII, everything from a beautiful cradle to a dry rocker. The necessities of a pioneer wife to the luxury of a city dweller.

We are scheduled to meet with the County Commissioners on the 22<sup>nd</sup> of January to ask for the money to build the addition. We have the money from Park and Rec. to put up the fence around the other five lots in back of our building. As soon as we get the bids in on it, that will go in when spring come around, the we will start on the grounds getting the landscaping in.

Greg, our student curator, (on loan from the school) and I have begun to clear the stage area for the Indian display that he has designed, complete with a wickiup incorporating a lot of the Indian artifacts that we have on display.

The Rhyolite exhibit that is currently on the stage will be moved to a new location in the Museum. Possibly extended a bit.

What is still needed desperately are warm bodies to help man the Museum and to help work with the displays. If you have an hour to two here or there, come on in and help us out.

Till next time (if I ever catch up with me)

Mary

## RIBITS FROM THE EDITOR-BULLFROG BILLY

Here is the latest edition of the "better late than never" newsletter. Obviously a lot has happened since Mary sent her column to me a few weeks ago. Hopefully we'll be caught up on all the news for the next edition. Mary has been busy, I've been busy and we wanted to focus on the big "Rhyolite Jamboree" so trying to patch everything together in a timely matter sort of misfired but I think we have enough current news to keep you pretty much up to speed. Of course the best way to get right up to date is to be in Beatty April 5<sup>th</sup>, 6<sup>th</sup> and 7<sup>th</sup> for the Jamboree.

Claudia has penned another great article for the History section. Very timely as it tells about the ties between the various camps in the Bullfrog District. Beatty and Rhyolite will be teamed up together once again for the Jamboree. Claudia has also submitted another selection of historical "newspaper tidbits" for you to enjoy.

As most of you will recall, in the not to distant past there was an annual event called the "Rhyolite Festival" put on by the "Friends of Rhyolite." Also an annual "Beatty Railroad Days" put on by the Beatty Museum and Historical Society. Now we anxiously await the first "Rhyolite Jamboree" which I'm thinking (oh help us all-me thinking) looks to be something on the order of the best of the Festival's and Railroad Days celebrations of the past all put together for one great weekend of fun for everyone. There is quite an extensive schedule of activities starting with a Bar-B-Q at the Rhyolite Bottle House Friday April 5<sup>th</sup>, 5-7pm, put on by the Beatty Lions Club. Following this tasteful opening to all the activities, musical entertainment will be provided. During the course of the weekend there will be many different activities as well as lots of vendors at the festival. You can view the most current schedule by visiting [www.rhyolitesite.com](http://www.rhyolitesite.com) and clicking on the jamboree icon. One of the highlights will be the premier of Ted Faye's latest films "The Great Desert Railroad Race," shown in the depot as well as two other films by Ted Faye during the weekend. We look forward to seeing you at this great event. Until the next time, stay well and of course.....RIBIT!

# Bullfrog Mining District History

by Claudia Reidhead

The ties between all of the camps here were very close, for you may be a citizen in this one today, that one tomorrow, or the other one the next day, depending on where the work was. And then you had Rhyolite and Bullfrog giving lots away to entice people to their community. Although the closest ties were between Beatty and Rhyolite because of the Montgomery Shoshone Mine, Rhyolite claimed the mine. Mr. and Mrs. Montgomery lived here in Beatty and the mine was considered a Beatty Mine along with the Mill that they had set up. I guess a sort of rivalry was there also because of the mine. The baseball teams were always in competition and there were races almost every weekend. But then again, the people of Rhyolite came here to the Oasis Valley for both water, which is the sustenance of life and for their picnics and parties. A lot of people came for the relief of the green trees and grasses. School picnics were given at both the Howell Ranch and Beatty Ranch, almost every year.

Christmas and the Holidays were celebrated between both towns. With the gentlemen and ladies of Rhyolite coming into Beatty, and the folks of Beatty going to Rhyolite, most parties were planned so that they could have one here and one there on alternating days or weekends.

The reliance of all of the towns on each other and cooperation of each to help the other was well demonstrated by the road between Pioneer and Rhyolite. When it got into such bad shape that it was hard traveling, they set up a meet in the middle of the day, work crews left Rhyolite and Pioneer on the same day and they cleared and smoothed the road from each end. They met in the middle at Indian Spring and had a whopper of a picnic with a good time being had by all. (And a few hangovers I am sure!)

There were also the ties of the Railroads between Beatty and Rhyolite. When Beatty had such a great party celebrating the arrival of the first train, Rhyolite decided it didn't need to celebrate with such a boisterous party when six weeks later the train arrived in Rhyolite. There was almost no note taken of the train

arrival. The people of Rhyolite had decided that the money they were going to spend on the celebration could be used for town improvement and cleaned up all the streets and roads along the tracks. In the long run, that was better for the town, because it made a good impression on the people arriving on the train.

The Depot that was being built took much longer than was expected and was not completed for six months after the arrival of the train tracks. This is the wonderful Depot that you see there today. It was also to the consternation of many the cause of the ad in the newspapers that read: The T&T train is now accepting passengers and cargo at it's new Depot, which is completed, and unlike the other trains Depot, ready for passengers.

So you can see that although there was competition between the towns, there was also the ties of friendship and brotherhood, as families were also scattered among the towns and camps.

There is another more lasting tie between them. As the miners and promoters left Rhyolite, some of them left their houses and the people of the area were a thrifty lot. Some of the wood houses were used for fire wood, but the major part of them were moved from Rhyolite to Carrera, Pioneer, Transvaal and Beatty. So there you have a much longer lasting tie, as some of the houses that remain in Beatty are the same house that were brought in from Rhyolite.

There you have a multiple of ties between the two towns and there are a great many more that we have yet to learn.

---

## TREASURER REPORT-Nov & Dec 01

All bills were paid for Dec 01 and we have a balance of \$1211.18 on Jan 5<sup>th</sup>. Membership money for the month of Dec was \$150.00. The Museum sent out 1300 mailers to recruit new members and the cost was \$293.00. Submitted by Dave Lottman, Treasurer.

**TIDBITS FROM THE BEATTY BULLFROG MINER NEWSPAPER**  
**APRIL 8, 1905 VOL.1 #1**

---

● All at the Beatty Bullfrog Miner office and get acquainted.

Mr. J.E. Green, hardware dealer of Beatty, has gone to San Francisco to purchase new supplies.

Brin & Blumlein, general merchandisers are erecting a cement store building 20' x 30' on Main street, Beatty.

Mr. J.P. Randall has just returned from Los Angeles, where he purchased a stock of general merchandise for Beatty.

If you know of any oil or coal land here in the Bullfrog Mining District, please write or call and inform the Bullfrog Miner.

Mr. R.R. Taylor of Colorado is here in the interest of the Albermarle Gold Mill and Mining Co. of Goldfield, purchasing property.

● Arrangements are being made for the establishment of a school and church at Beatty. Mrs. Gibson conducts a Sunday school at her residence.

Good Dobe Bricks are worth from \$30 to \$65 per thousand, depending on size and quality. They will last a century in this climate, where rainfall does not exceed six inches.

The management of the Bullfrog Miner, returns thanks to Mr. and Mrs. E.A. Montgomery for a first class dinner at the Goldbug Restaurant last Sunday, on the arrival of The Miner printing plant.

Mr. A.G. Cushman, President of the Rhyolite Company, came to Beatty with his wife, on business. He says Rhyolite will soon have a Post Office and ample water developed from their own springs.

Mr. Van Horten of Colorado, arrived in Beatty last week with 24 burros loaded with sacks of barley, each sack weighing 85. He came via Las Vegas. The Burros ● worth \$40 to \$60 each.

A company is now developing power on Bishop Creek, California, 75 miles Northwest of this city, which will furnish electric power for Tonopah, Goldfield and Bullfrog Mining District. The water supply is ample to furnish power for adjacent county.

Mr. F.B. Wortman and others of Beatty have purchased a group of six claims located at Buck Springs, one mile and a half from the Original Bullfrog Mine. The owners are doing development work on these claims, which show well defined gold ledges.

The agriculture possibilities of the Amargosa Valley are illustrated at the Beatty and Davis farms. The water of the springs and river, properly utilized will make a flourishing valley, and yield fruit and vegetables sufficient to supply the cities in the Bullfrog District.

Mr. L.D. Porter of Johannesburg has a stock of general merchandise on the way to Beatty, and is erecting a building on Main street, Beatty, to receive them. The same firm will also place a stock in Bullfrog. They will put two ten animal teams on the road and accept freight contracts.

One of the promising undeveloped group of claims in the Beatty District is the Standpoint group, on the South side of the Withee Mountain, less than a half mile North-East of the Wild Cat Company's ground. The group consists of four full claims; all show good on the surface and are owned by Terrell and Luetjens. Rhyolite and Beatty are each to have banking houses.

Mr. James Kelly contemplates the erection of a hotel on his Second street property, Beatty.

W.R. Pock of San Francisco, arrived in Beatty Monday looking for a business location.

It is reported that the Miller stage line from this city to Las Vegas, will soon begin operations.

It looks like business to see the long freight teams hauling rich ore from the Montgomery-Shoshone mine.